

4-BEDROOM PENTHOUSE

Type PH 1 (PL)

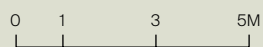
304 sq m | 3272 sq ft

INCLUSIVE OF 28 SQM BALCONY & 8 SQM AC LEDGE

Tower 18

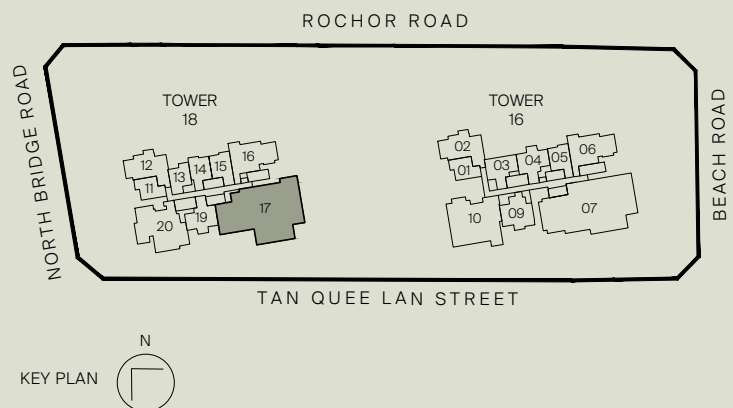
UNIT

#30-17



Legend (where applicable)

- | | |
|-------------------------------|--------------------------------|
| F - Fridge | VD - Vacuum Drawer |
| IH - Induction Hob | WD - Warmer Drawer |
| GH - Gas Hob | DW - Dishwasher |
| SO - Steam Oven | W - Washer |
| CSO - Combi Steam Oven | D - Dryer |
| CO - Convectional Oven | DB - Distribution Board |
| WCH - Wine Chiller | SC - Shoe Cabinet |



All plans are subjected to amendments as may be approved by the relevant authorities. Floor areas are approximate measurements and are subjected to final survey.

5-BEDROOM PENTHOUSE

Type PH 2 (PL)

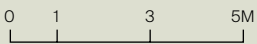
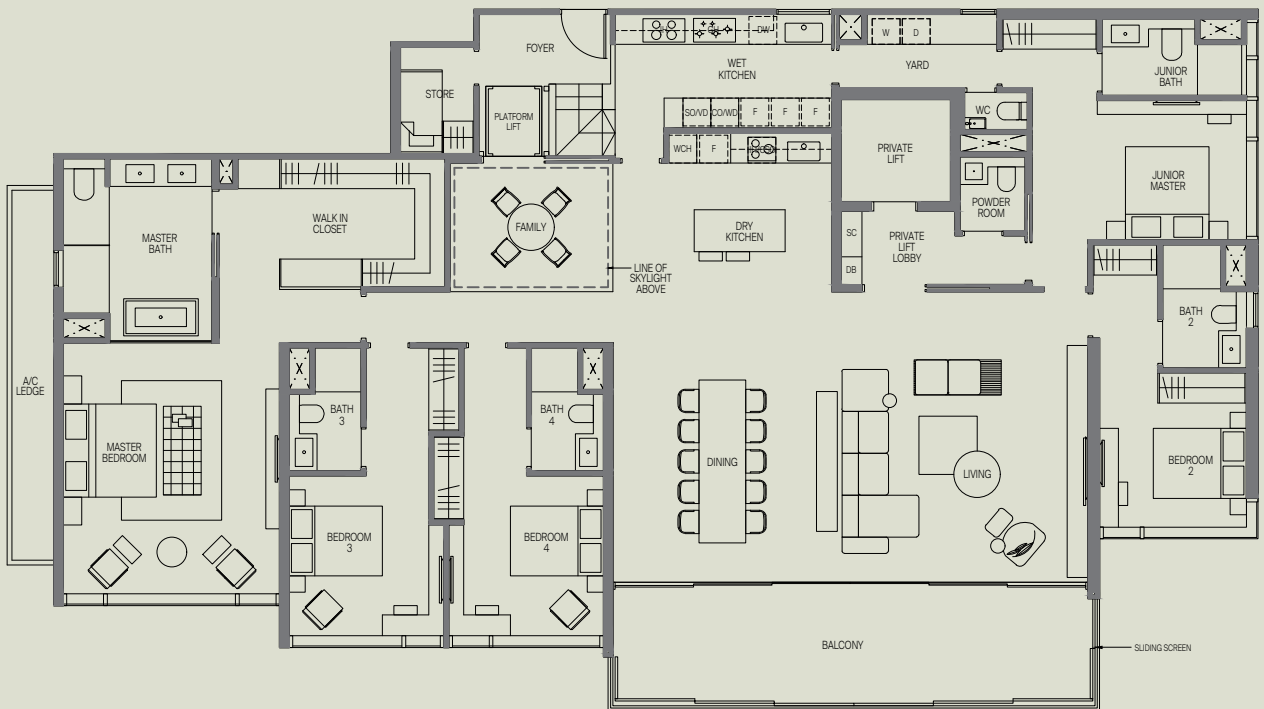
327 sq m | 3520 sq ft

INCLUSIVE OF 28 SQM BALCONY & 9 SQM AC LEDGE

Tower 16

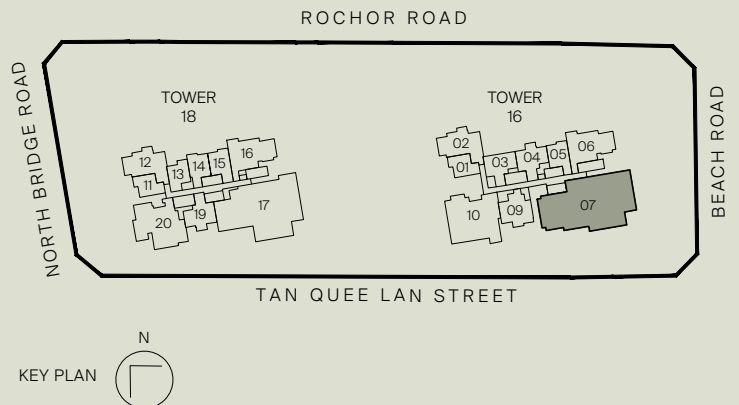
UNIT

#30-07



Legend (where applicable)

- | | |
|-------------------------------|--------------------------------|
| F - Fridge | VD - Vacuum Drawer |
| IH - Induction Hob | WD - Warmer Drawer |
| GH - Gas Hob | DW - Dishwasher |
| SO - Steam Oven | W - Washer |
| CSO - Combi Steam Oven | D - Dryer |
| CO - Convectional Oven | DB - Distribution Board |
| WCH - Wine Chiller | SC - Shoe Cabinet |



All plans are subjected to amendments as may be approved by the relevant authorities. Floor areas are approximate measurements and are subjected to final survey.