

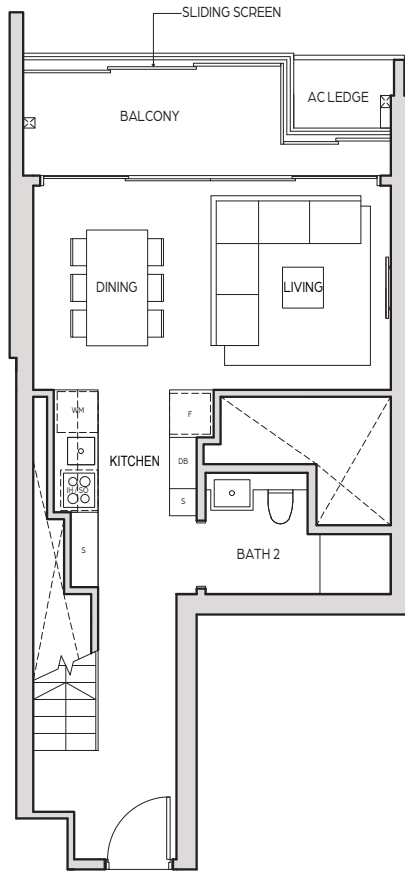
# 2 BEDROOM DUPLEX

## 2卧复式

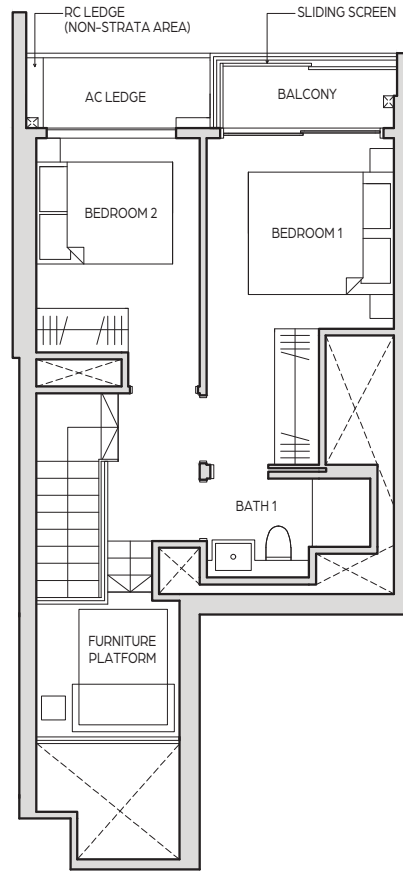
### TYPE B7a-DP

95 sq m / 1023 sq ft

#26-07 | #28-07 | #30-07 | #32-07



LOWER FLOOR

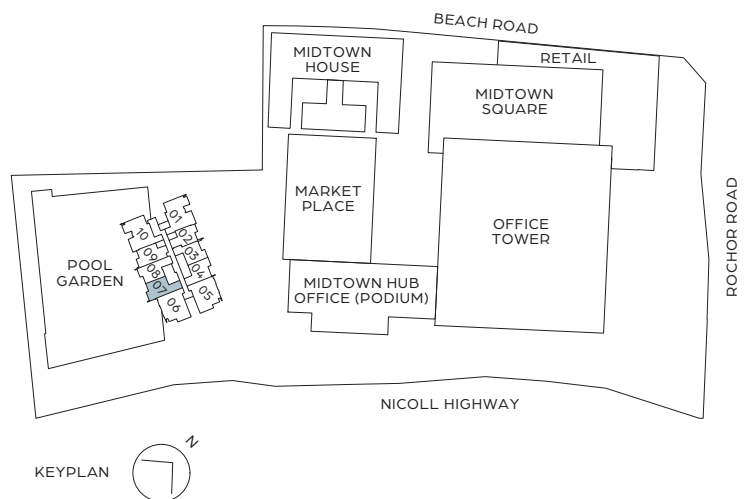


UPPER FLOOR



**LEGEND (WHERE APPLICABLE)**

- F** - FRIDGE
- WM** - WASHING MACHINE
- S** - STORAGE
- DB** - DISTRIBUTION BOARD
- IH** - INDUCTION HOB
- SO** - STEAM OVEN



KEYPLAN



All areas and measurements stated in this floor plan are approximate and subject to final survey. The layout / location of wardrobes, kitchen cabinets and appliances, DB, door swing directions and sanitary wares are subject to final design. BP Approval No. A1606-00001-2018-BP03 dated 24 April 2020